



# Pancake Alternator Assembly & Disassembly Diagrams

Rev 1, 6/17/2010

Sullivan UV

One North Haven St.  
Baltimore, MD 21224

[www.sullivanuv.com](http://www.sullivanuv.com)

(P) 410-732-3500 (F) 410-327-7443

Front View –  
Rotor Arbor  
Installed



Rotor Tools

Rear View-  
Rotor Arbor  
Installed



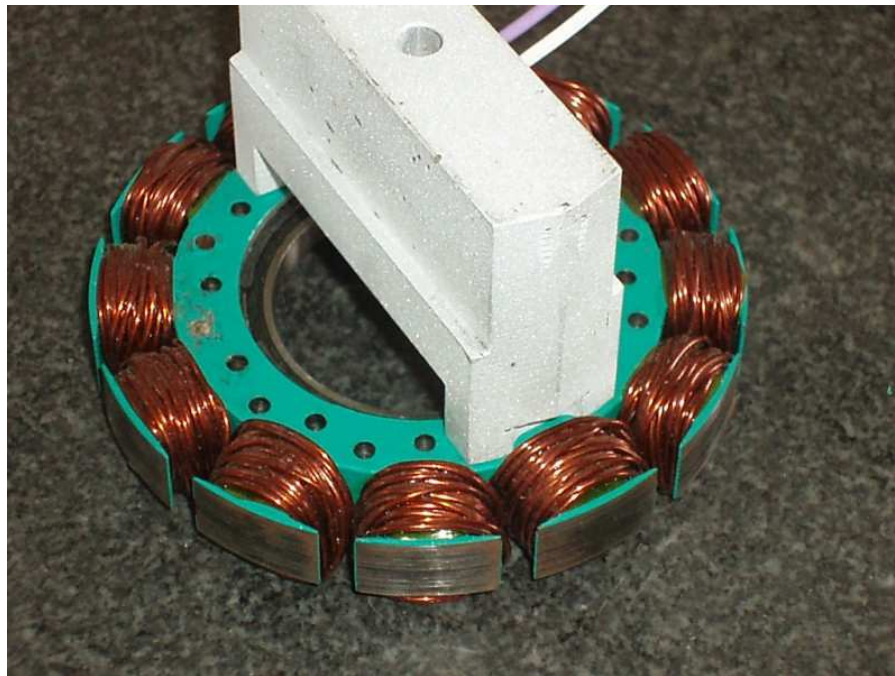


Stator Tools



Front View Stator Tool

\*\*\* Note the wire exit direction\*\*\*



Rear View Stator Tool

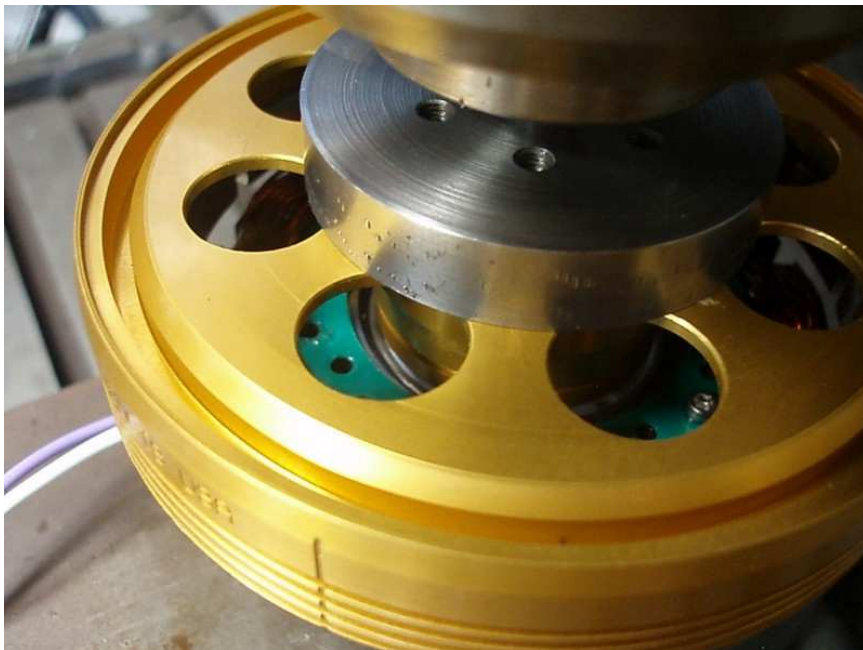
\*\*\* Note the wire exit direction\*\*\*



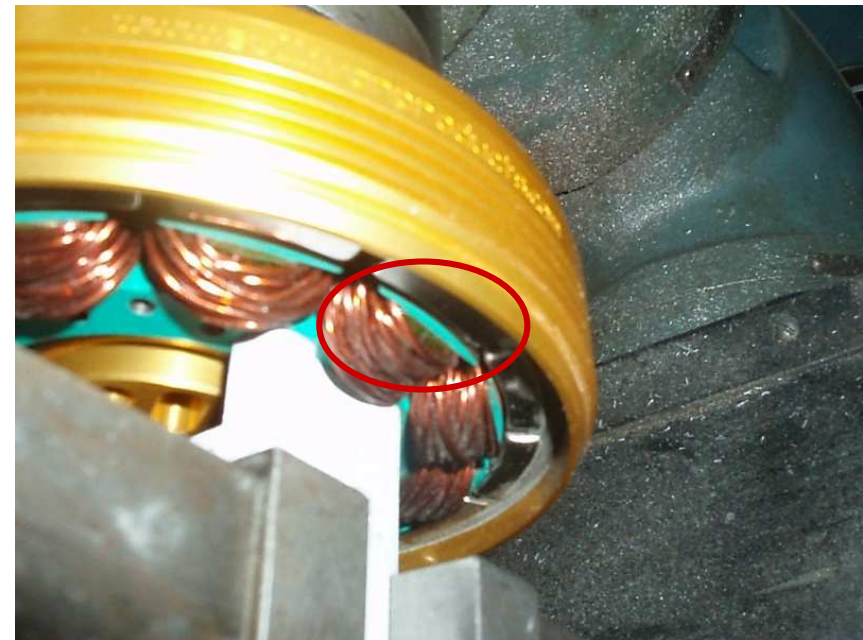
Use Caution to not damage windings  
When installing Stator Tool

Rotor and stator may be assembled by hand on sizes smaller than 110mm

Larger sizes require use of a arbor press, drill press, or similar fixture to control assembly process.



Fixtures with X-Y sliding tables make alignment of rotor Hub to the bearing easier



Rotor lamination and magnet face should be At the same height when correctly located



Remove fixtures, rotor may need to be turned to  
Access all screw heads



Rotor – Stator Retaining Ring



Install retaining ring in groove in rotor hub



Proper retaining ring fit