

S676-230U-01

50 to 220 Watt Alternator

Featuring:

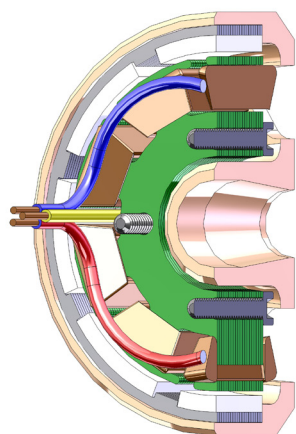
- 3 Phase brushless commutation
 - Designed for direct drive on engine crankshaft
 - NdFeB magnets
 - Humidity and moisture-resistant
 - Designed to mate natively to Zenoah G-26 rear output shaft with provided stator mounting plate
-



S676-230U-01

50 to 220 Watt Alternator

Specifications



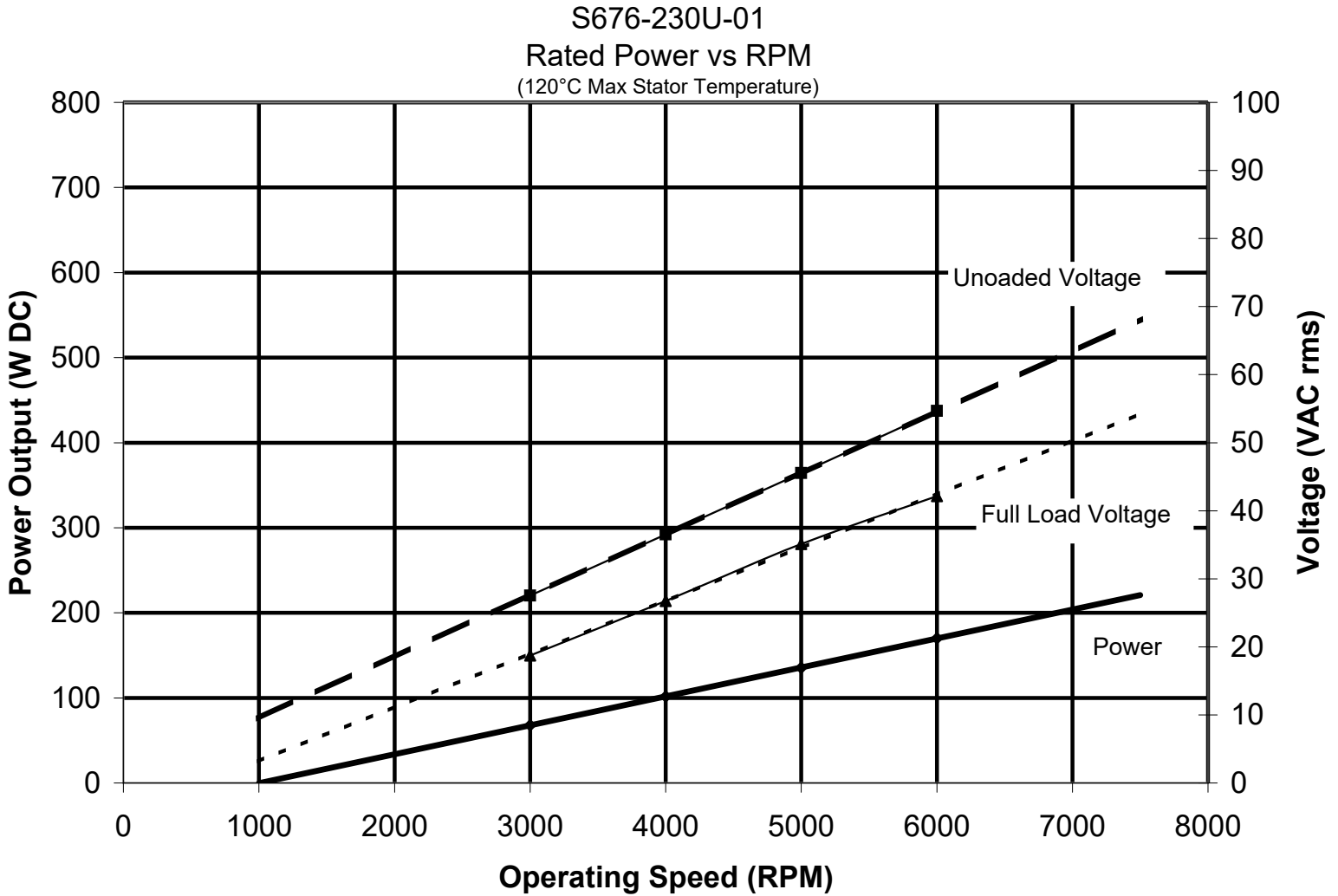
| | |
|---------------------------|--|
| Model number: | S676-230U-01 |
| Alternator diameter: | 59mm |
| Alternator thickness: | 25mm |
| Alternator weight: | 255 g |
| Engines: | Most engines 5cc to 30cc |
| Rated power at 2500 RPM: | 50W |
| Rated power at 7500 RPM: | 220W |
| Standard wind type: | Three phase |
| No-load voltage constant: | 9.11 VAC/1000 RPM (rms voltage, line to line) |
| Thermal: (Rotor) | Continuous Operation* 85°C Absolute Maximum* 120°C *Higher temperature available but maximum power will be reduced |
| Thermal: (Stator) | Continuous Operation 120°C Absolute Maximum 200°C |
| Options: | Special winding Modified shell machining |

S676-230U-01

50 to 220 Watt Alternator



Performance



Sullivan UV

8950 Yellow Brick Rd

Baltimore, MD 21237

Phone: 410-732-3500 Fax: 410-327-7443

W: www.SullivanUV.com E: sales@sullivanuv.com

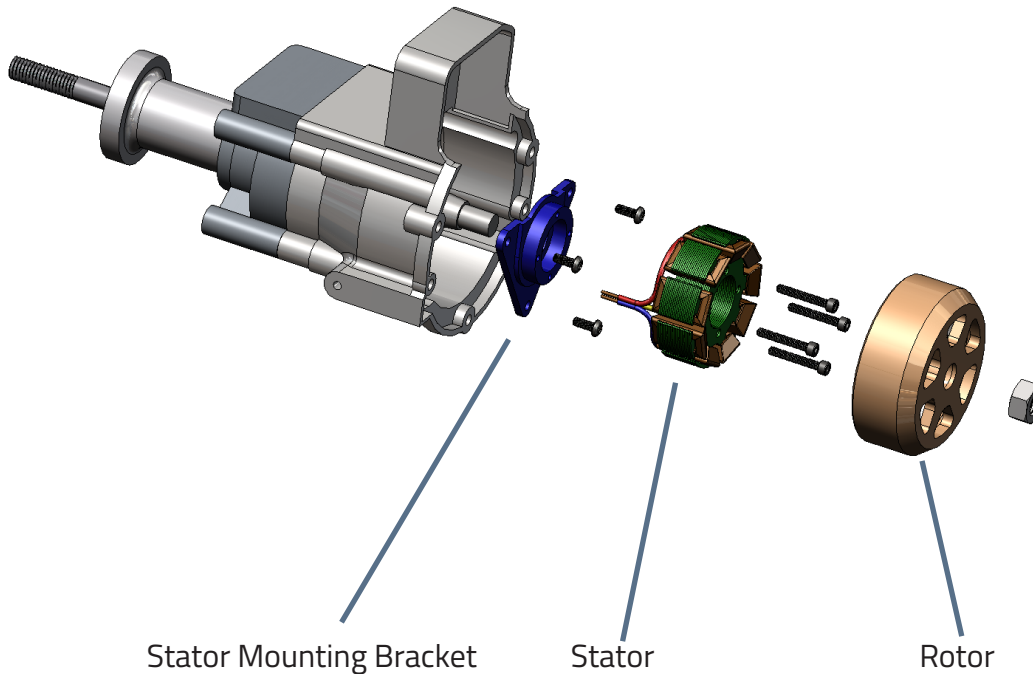
Sullivan UV is a Baltimore, Maryland-based manufacturer of custom crafted starters, alternators and control hardware.

S676-230U-01

50 to 220 Watt Alternator



Mounting



Stator Mounting Bracket

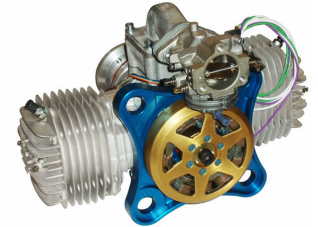
Stator

Rotor

Zenoah G-26 with S676-230U-01



3W-28i with S676-300F-01



3W-342 with rear mounted
S676-500



3W-200 with S675-500

Sullivan Pancake Alternators are typically designed to be directly driven by the engine crankshaft. They consist of three main parts, Rotor, Stator, and the Stator Support Bracket. The Rotor and Stator are common for most installations, while the Stator Support Brackets are specific to each engine and alternator combination.

The **Rotor** is affixed directly to the crankshaft and is supported by the crankshaft bearings. Placement can be on the front shaft between the Propeller Hub and Propeller, or on the rear shaft when available. Other installation configurations can also be accommodated.

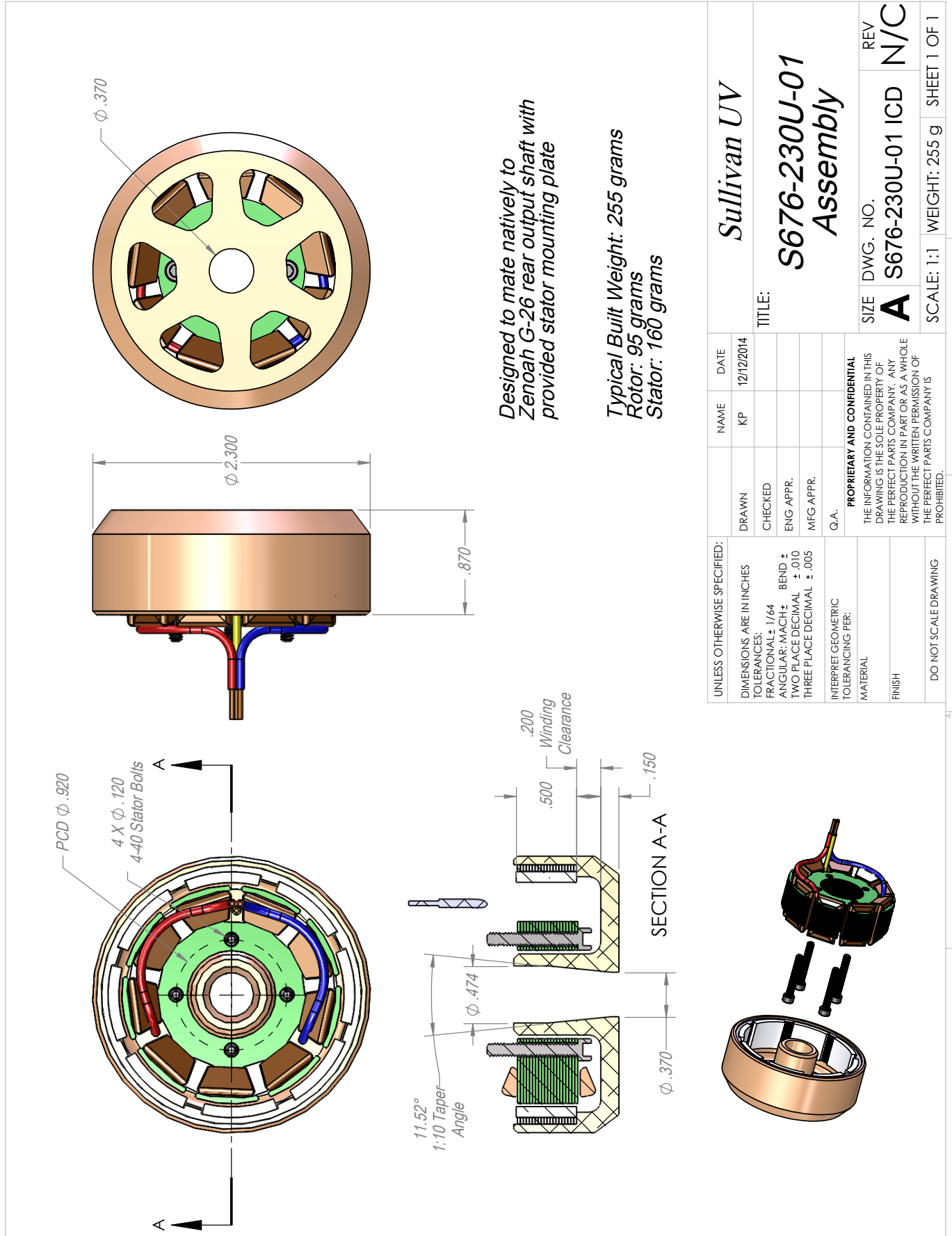
The **Stator** is mounted to the engine crankcase via the Stator Mounting Bracket. The Stator is held rigidly in place concentric to the Rotor, with the windings and magnets aligned axially. An optional thin section bearing can be included that provides the proper alignment between the Rotor and Stator if needed.

The **Stator Mounting Brackets** are typically CNC machined from Billet Aluminum. They attach to the engine by either clamping to existing features or bolting directly to the crankcase. In some cases it is necessary to drill and tap the crankcase to create mounting points. The Stator is then bolted to the Mounting Bracket to complete the installation. Installation guides can be downloaded at www.SullivanUV.com

For advanced systems, stator mounting features can be incorporated into the crankcase design which eliminate the need for the bearing and brackets. This approach saves considerable weight and cost but requires control over the engine manufacturing process. If this option is available please contact Sullivan Sales and Engineering, Sales@SullivanUV.com, to discuss the details.

S676-230U-01

50 to 220 Watt Alternator



Designed to mate natively to Zenoh G-26 rear output shaft with provided stator mounting plate

*Typical Built Weight: 255 grams
Rotor: 95 grams
Stator: 160 grams*

| | | | | | |
|--------------------------------------|--|-------------------------------------|---------------------------------------|-------------------------------------|-------------------------|
| UNLESS OTHERWISE SPECIFIED: | | NAME | DATE | Sullivan UV | |
| DIMENSIONS ARE IN INCHES | | KP | 12/12/2014 | TITLE: S676-230U-01 Assembly | |
| TOLERANCES: | | DRAWN | CHECKED | SIZE | REV |
| FRACTIONAL: ± 1/64 | BEND ± | ENG APPR. | MFG APPR. | A | S676-230U-01 ICD |
| ANGULAR: MACH ± | TWO PLACE DECIMAL ± .010 | Q.A. | SCALE: 1:1 WEIGHT: 255 g SHEET 1 OF 1 | | |
| THREE PLACE DECIMAL ± .005 | | PROPRIETARY AND CONFIDENTIAL | | | |
| INTERPRET GEOMETRIC TOLERANCING PER: | THE INFORMATION CONTAINED IN THIS DRAWING IS THE SOLE PROPERTY OF THE PERFECT PARTS COMPANY. ANY REPRODUCTION IN PART OR AS A WHOLE WITHOUT THE WRITTEN PERMISSION OF THE PERFECT PARTS COMPANY IS PROHIBITED. | | | | |
| MATERIAL | DO NOT SCALE DRAWING | | | | |
| FINISH | | | | | |