



# SREGS-P3-2000U-01

## 2000 Watt Power Management Unit

### Typical Applications:

- Remote Power Generation
- Power Regulation from Alternative sources, ex. wind or solar
- Unmanned Air Vehicles (UAV's) and Unmanned Ground Vehicles (UGV's)

### Featuring:

- 3 Phase AC primary input, 15 - 85 VACrms.
- Configurable to support LiPo, Lilon, LifePO4, NiCad, NiMH, SLA, and Lead Acid Battery Backup.
- Three simultaneous output voltages, 24 - 32 VDC 72 Amps, 11 - 15 VDC 15 Amps, and 4.8 - 7 VDC 7 Amps
- MIL-SPEC circular connectors
- Operates up to 92% peak efficiency
- Provides automatic switching for DC ground power, and back up battery sources

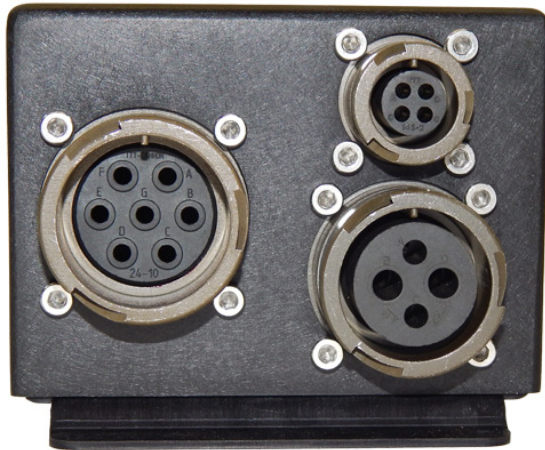


# SREGS-P3-2000U-01

2000 Watt Power Management Unit



## Specifications



Output:	Conditions	Min	Max	Input:	Conditions	Min	Max
Main Output:	72A/2000W Max	24 VDC*	32 VDC*	Alternator Input Voltage:	3Ø 0 - 1 KHz	15 VAC	85 VAC
Secondary Output:	15A/180W Max	11 VDC*	15 VDC*	Backup Battery:	LiPO, Lilon, LifePO4, NiCad, NiMH, SLA, Lead Acid*	24 VDC	32 VDC
Tertiary Output:	7A/42W Max	4.8 VDC*	7 VDC*				
Maximum Total Power:			2000 Watts	External Shore Power:	DC	24 VDC	32 VDC
Efficiency:	Peak		92%	Battery Switch Time:	No interruption of Output		250nS
Self Protection:	Overvoltage, Undervoltage, Overcurrent, Reverse EMF			<b>Mechanical: Conditions</b>			
Maximum Overload Current:	Up to 10mS duration		125%	Enclosure Material:	Black Anodized Aluminum		
Output Ripple, Maximum:	p-p All Outputs		500mV	Dimensions:	83 mm x 112 mm x 253 mm		
Voltage Regulation:	All outputs		+/-500mV	Weight:	1950g		
Status Signal:	5V High Impedance			Connectors:	MIL-SPEC Circular Connectors		
Battery Charger Type:	Basic, Cell monitoring, or Full balance charging options available			Design Standard:	MIL-STD 1275D		
Back-up Battery Charging:	LiPO, Lilon, LifePO4, NiCad, NiMH, SLA, Lead Acid*		2.0 Amps	Conformal Coating:	MIL-I-46058C Type UR		
				Cooling:	32 CFM Fan, may be replaced by forced air		
				Operating Temperature:	-20C to 55C Ambient		
				Storage Temperature:	-40C to 85C		

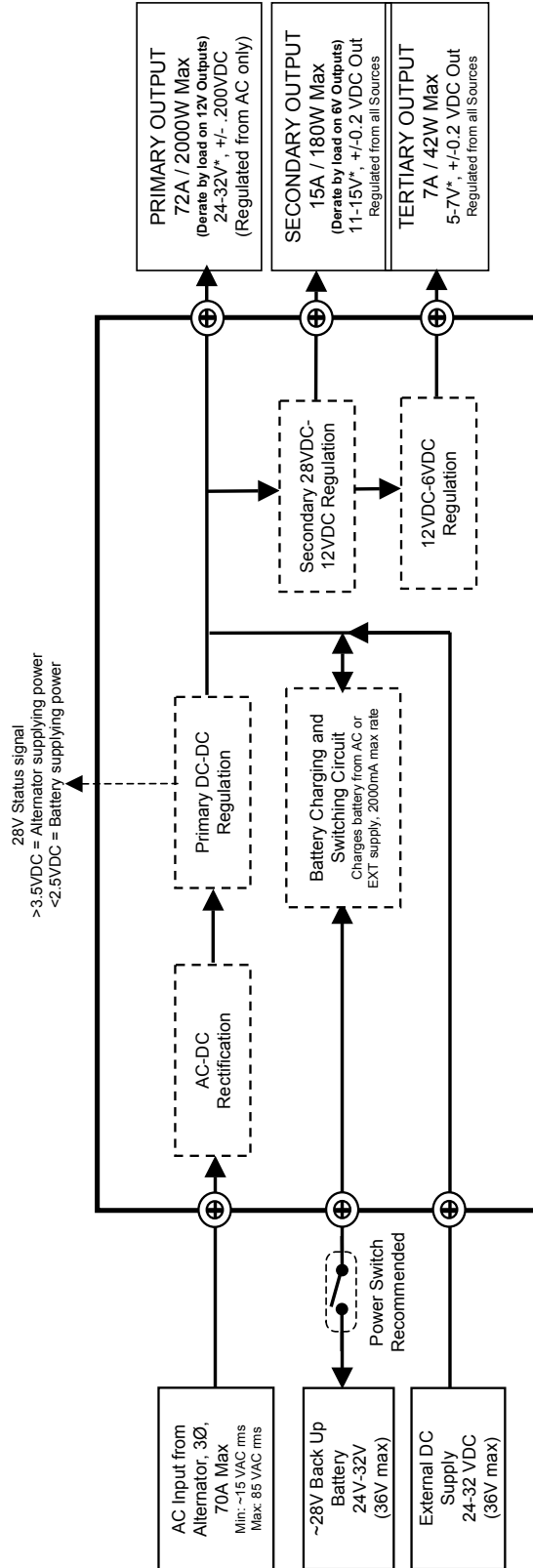
\*Factory Adjustable

# SREGS-P3-2000U-01

2000 Watt Power Management Unit



## SULLIVAN UV SREGS-P3-2000U-01 Block Diagram



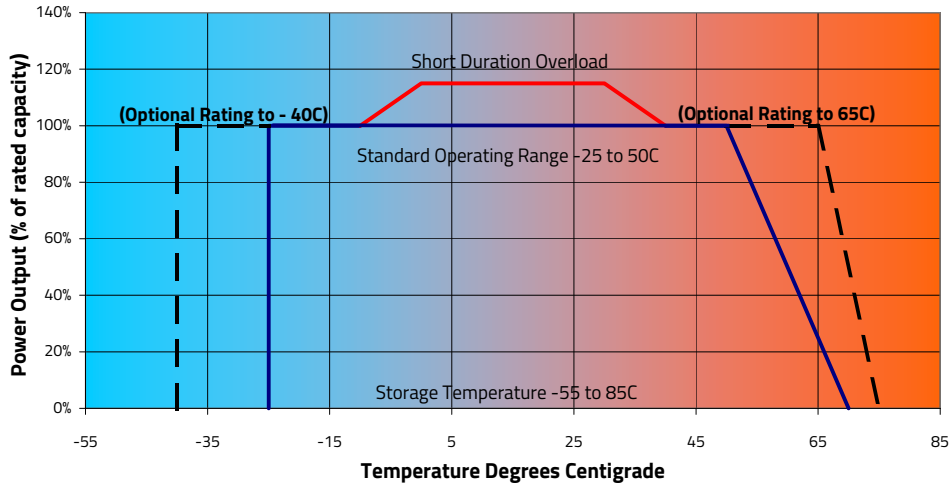
\*Output voltages are factory adjustable within the range specified. Other voltage options may be available; enquire

### General Notes:

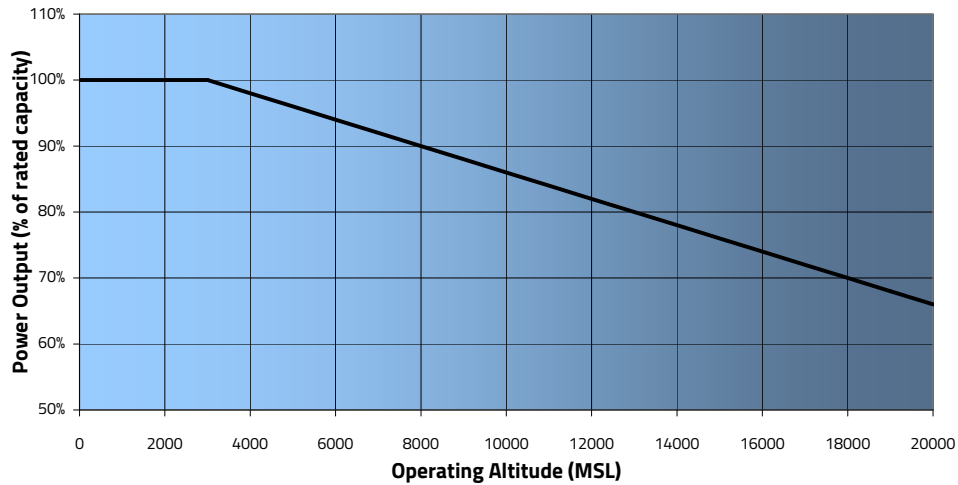
- Customer responsible for fusing all loads
- Battery recharges from External Input or AC input
- All connections are MIL-5051 Circular Connectors
- All outputs are filtered to 100Mhz to 1 Ghz and include protection against Reverse Polarity Transients, Etc

# Performance

### Allowable Storage and Operating Temperature Profile

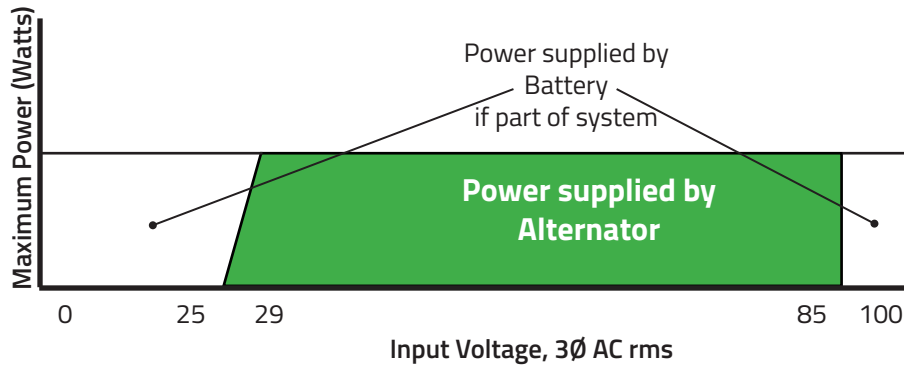


### Power Derating due to Altitude



### Alternator Input Range

28V Primary Output



# SREGS-P3-2000U-01

2000 Watt Power Management Unit

