



SREGS-P3-2000U-02

2000 Watt Power Management Unit

Typical Applications:

- Unmanned Air Vehicles (UAV's) and Unmanned Ground Vehicles (UGV's)
- Remote Power Generation
- Power Regulation from Alternative sources, ex. wind or solar

Featuring:

- 3 Phase AC primary input, 15 - 85 VACrms.
- Very high power density, $20\text{W}/\text{in}^3$ (1.2W/cm³)
- 24 - 32 VDC 72 Amp Output
- MIL-SPEC circular connectors
- Operates up to 94% peak efficiency
- Lightweight aluminum enclosure with active thermal management

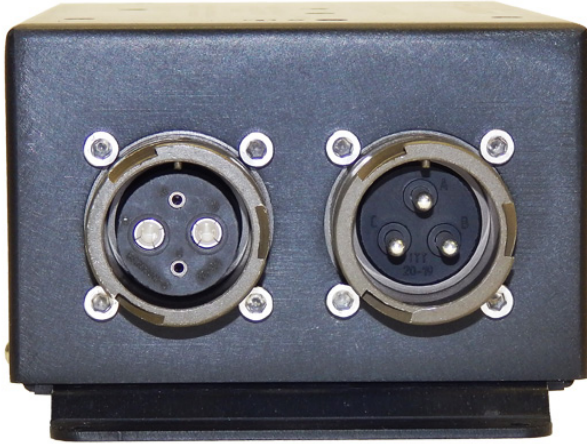


SREGS-P3-2000U-02

2000 Watt Power Management Unit



Specifications



| Output: | Conditions | Min | Max | Input: | Conditions | Min | Max |
|---------------------------|--|---------|------------|-------------------------------|---|--------|--------|
| Main Output: | 72A/2000W Max | 24 VDC* | 32 VDC* | Alternator Input Voltage: | 3Ø 0 - 1 KHz | 15 VAC | 85 VAC |
| Secondary Output: | N/A | | | Backup Battery: | N/A | | |
| Tertiary Output: | N/A | | | | | | |
| Maximum Total Power: | | | 2000 Watts | External Shore Power: | DC | 24 VDC | 32 VDC |
| Efficiency: | Peak | | 94% | Battery Switch Time: | N/A | | |
| Self Protection: | Overvoltage, Undervoltage, Overcurrent, Reverse EMF | | | Mechanical: Conditions | | | |
| Maximum Overload Current: | Up to 10mS duration | | 125% | Enclosure Material: | Black Anodized Aluminum | | |
| Output Ripple, Maximum: | p-p All Outputs | | 500mV | Dimensions: | 210 mm x 112 mm x 77 mm | | |
| Voltage Regulation: | All outputs | | +/-500mV | Weight: | 1450g | | |
| Status Signal: | 5V High Impedance | | | Connectors: | MIL-SPEC Circular Connectors | | |
| Battery Charger Type: | Basic, Cell monitoring, or Full balance charging options available | | | Design Standard: | MIL-STD 1275D | | |
| Back-up Battery Charging: | N/A | | | Conformal Coating: | MIL-I-46058C Type UR | | |
| | | | | Cooling: | 32 CFM Fan, may be replaced by forced air | | |
| | | | | Operating Temperature: | -20C to 55C Ambient | | |
| | | | | Storage Temperature: | -40C to 85C | | |

*Factory Adjustable

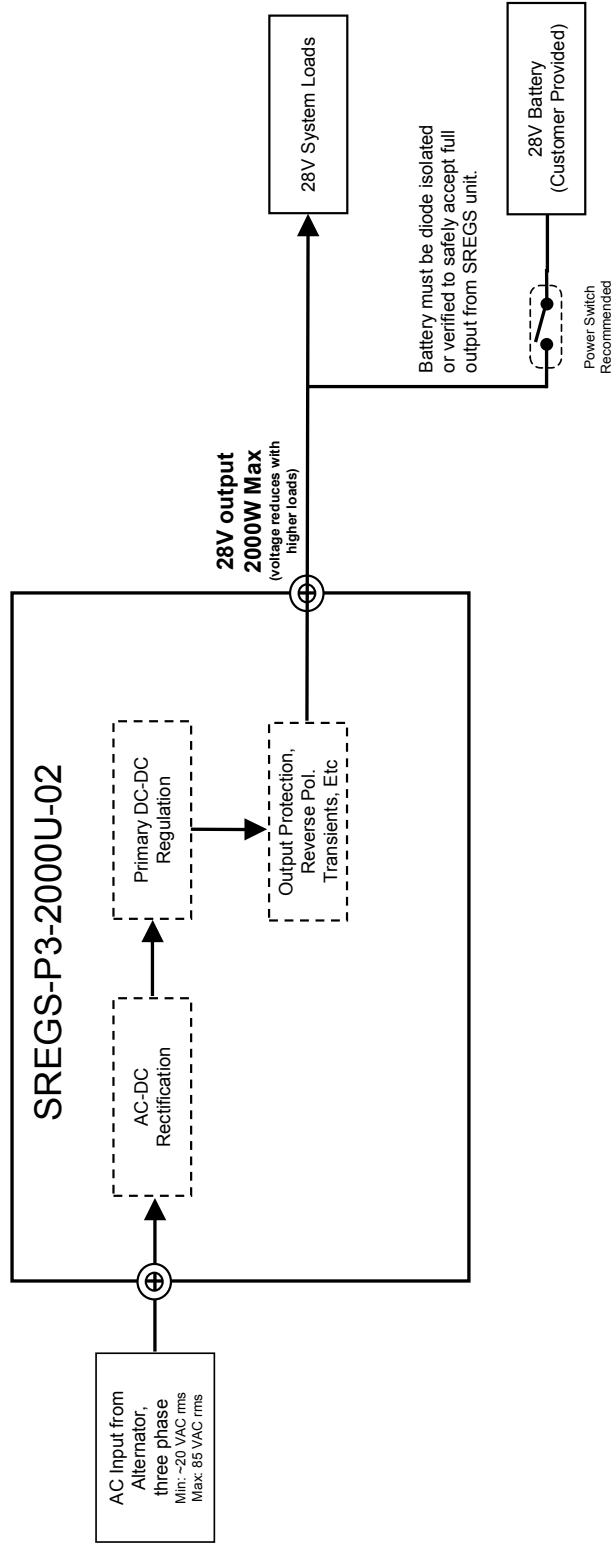
SREGS-P3-2000U-02

2000 Watt Power Management Unit



SULLIVAN UV SREGS-P3-2000U-02 Block Diagram

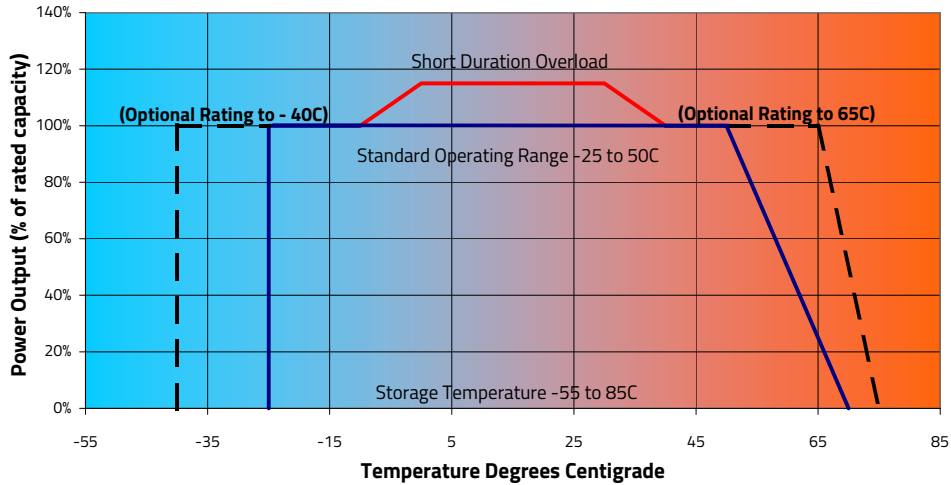
Created: April 10th, 2014
Revised: N/A



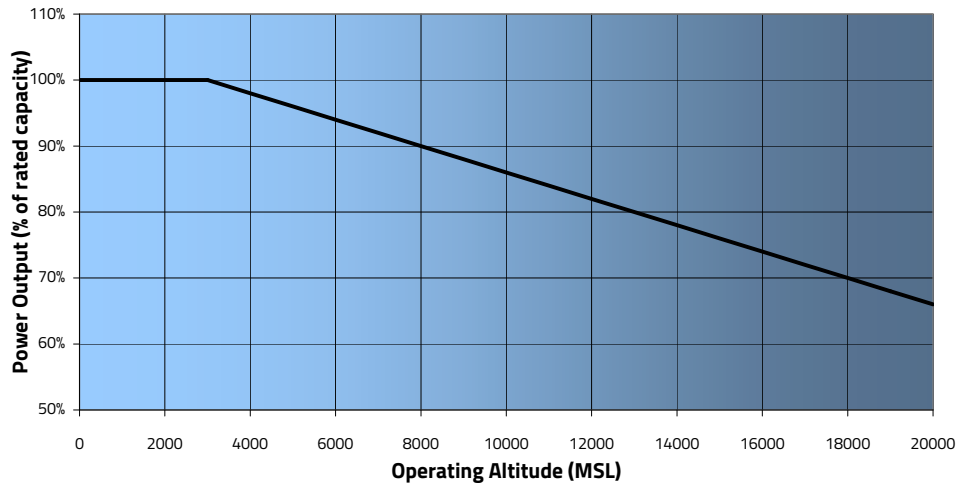
For engineering use only. For further information contact:
Sullivan Products
(410) 732-3500

Performance

Allowable Storage and Operating Temperature Profile

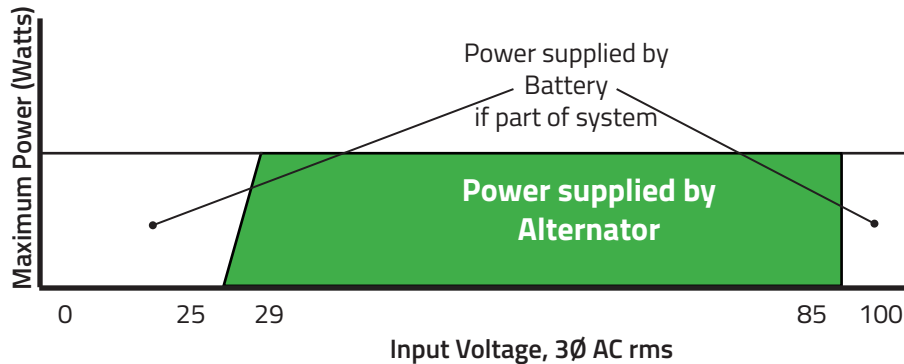


Power Derating due to Altitude



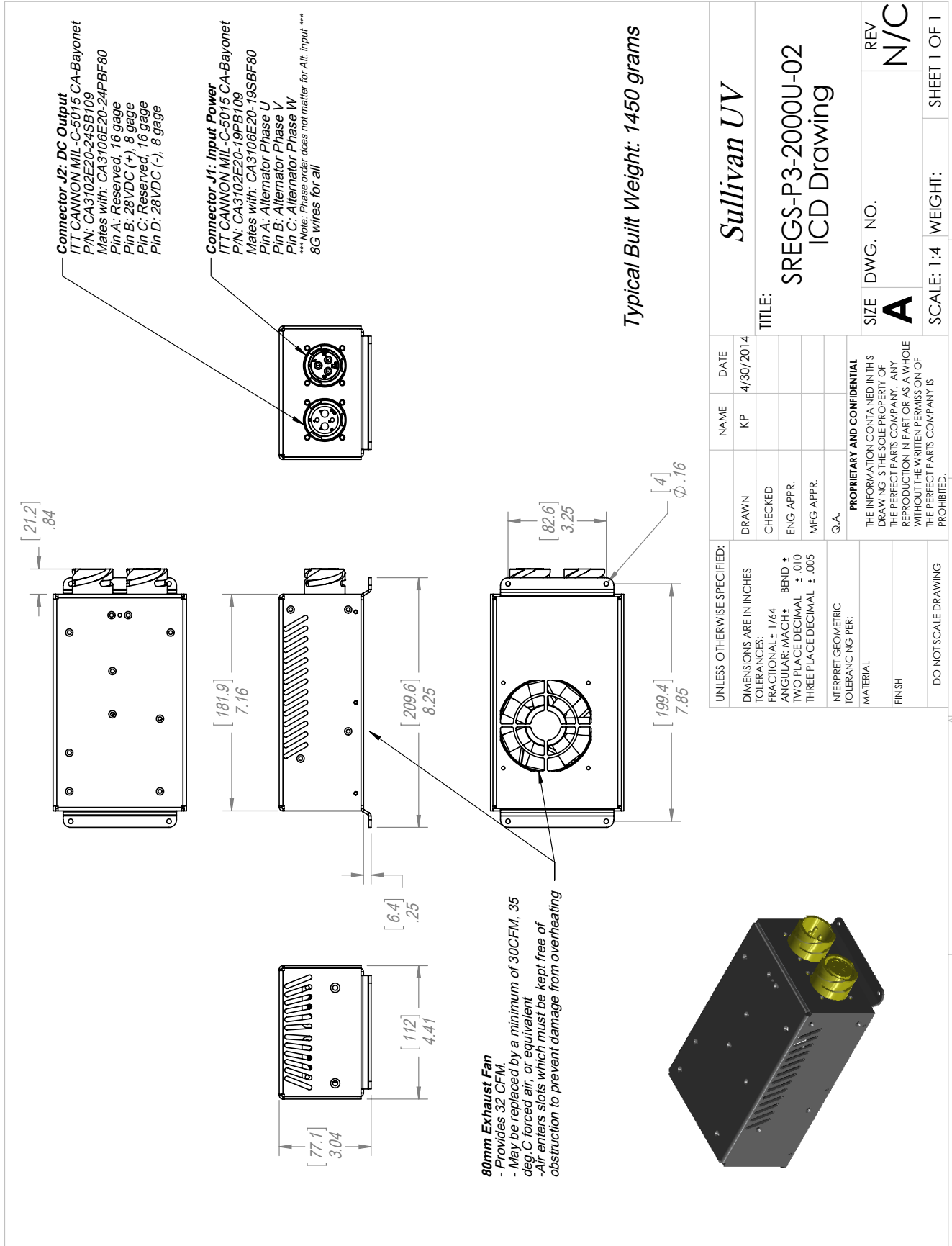
Alternator Input Range

28V Primary Output



SREGS-P3-2000U-02

2000 Watt Power Management Unit



| | | | |
|--|--|------------|----------------------|
| UNLESS OTHERWISE SPECIFIED: | | NAME | DATE |
| DIMENSIONS ARE IN INCHES | | KP | 4/30/2014 |
| TOLERANCES: | | | |
| FRACTIONAL: ± 1/64 | | | |
| ANGULAR: MACH ± BEND ± | | | |
| TWO PLACE DECIMAL ± .010 | | | |
| THREE PLACE DECIMAL ± .005 | | | |
| INTERPRET GEOMETRIC TOLERANCING PER: | | | |
| MATERIAL | | | |
| FINISH | | | |
| DO NOT SCALE DRAWING | | | |
| PROPRIETARY AND CONFIDENTIAL THE INFORMATION CONTAINED IN THIS DRAWING IS THE SOLE PROPERTY OF THE PERFECT PARTS COMPANY. ANY REPRODUCTION IN PART OR AS A WHOLE WITHOUT THE WRITTEN PERMISSION OF THE PERFECT PARTS COMPANY IS PROHIBITED. | | | |
| Sullivan UV | | SIZE | DWG. NO. |
| TITLE: SREGS-P3-2000U-02 ICD Drawing | | A | REV N/C |
| | | SCALE: 1:4 | WEIGHT: SHEET 1 OF 1 |

