



SREGS-P3-2000U-03

2000 Watt Power Management Unit

Typical Applications:

- Unmanned Air Vehicles (UAV's) and Unmanned Ground Vehicles (UGV's)
- Remote Power Generation
- Power Regulation from Alternative sources, ex. wind or solar

Featuring:

- 3 Phase AC primary input, 15 - 85 VACrms.
- Two simultaneous output voltages, 24-30 VDC 72 Amps, and 10-15 VDC 13 Amps
- MIL-SPEC circular connectors
- Operates up to 94% peak efficiency
- Lightweight aluminum enclosure with active thermal management



SREGS-P3-2000U-03

2000 Watt Power Management Unit



Specifications



Output:	Conditions	Min	Max	Input:	Conditions	Min	Max
Main Output:	72A/1850W Max	24 VDC*	32 VDC*	Alternator Input Voltage:	3Ø 0 - 1 KHz	15 VAC	85 VAC
Secondary Output:	13A/150W	10 VDC*	15 VDC*	Backup Battery:	N/A		
Tertiary Output:	N/A			External Shore Power:	DC	24 VDC	32 VDC
Maximum Total Power:			2000 Watts	Battery Switch Time:	N/A		
Efficiency:	Peak		94%	Mechanical: Conditions			
Self Protection:	Overvoltage, Undervoltage, Overcurrent, Reverse EMF			Enclosure Material:	Black Anodized Aluminum		
Maximum Overload Current:	Up to 10mS duration		125%	Dimensions:	230 mm x 100 mm x 100 mm		
Output Ripple, Maximum:	p-p All Outputs		500mV	Weight:	2200g		
Voltage Regulation:	All outputs		+/-500mV	Connectors:	MIL-SPEC Circular Connectors		
Status Signal:	5V High Impedance			Design Standard:	MIL-STD 1275D		
Battery Charger Type:	Basic, Cell monitoring, or Full balance charging options available			Conformal Coating:	MIL-I-46058C Type UR		
Back-up Battery Charging:	N/A			Cooling:	32 CFM Fan, may be replaced by forced air		
				Operating Temperature:	-20C to 55C Ambient		
				Storage Temperature:	-40C to 85C		

*Factory Adjustable

SREGS-P3-2000U-03

2000 Watt Power Management Unit

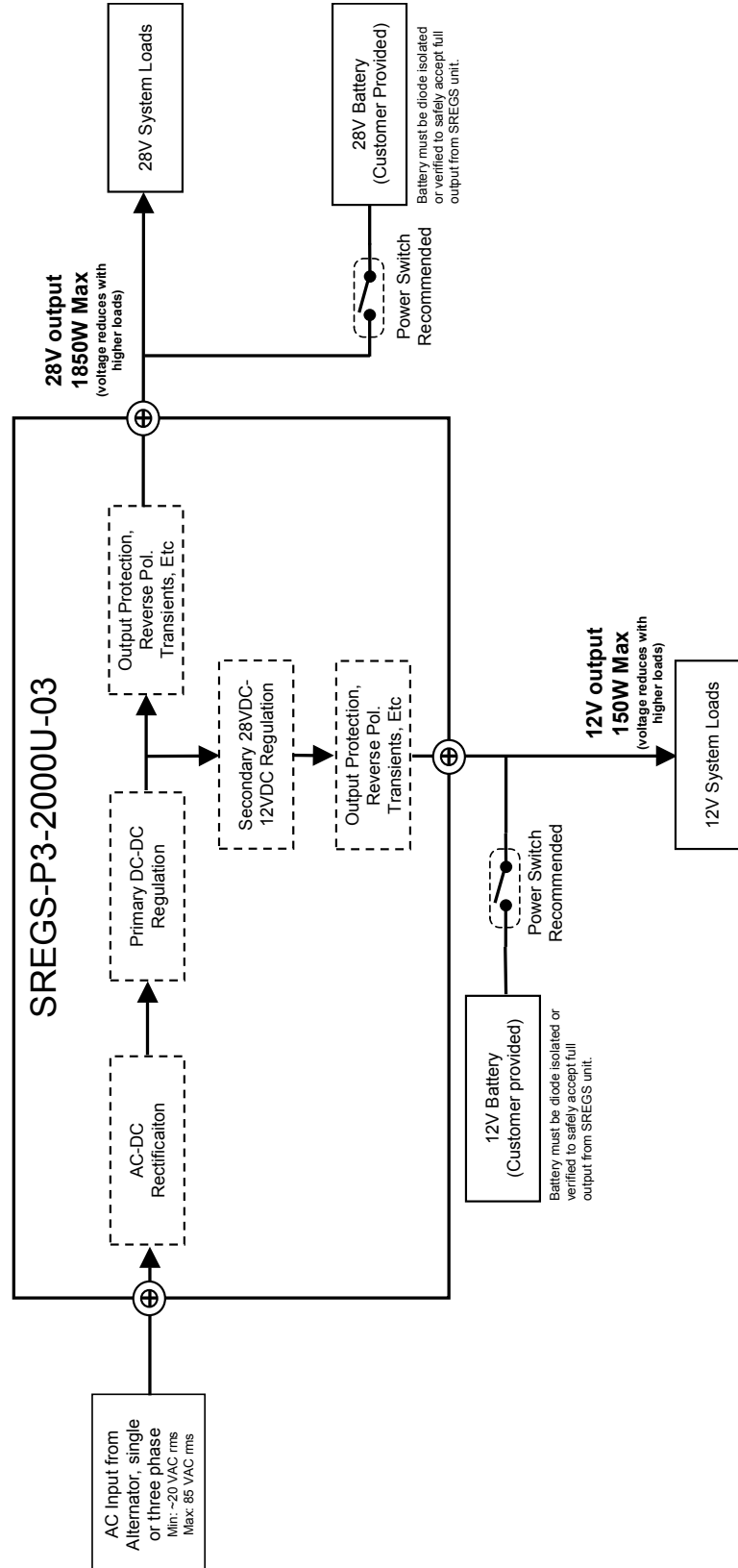


8950 Yellow Brick Rd
Baltimore MD 21237
(410) 732-3500
www.sullivanuv.com

SULLIVAN UV

SREGS-P3-2000-03 Block Diagram

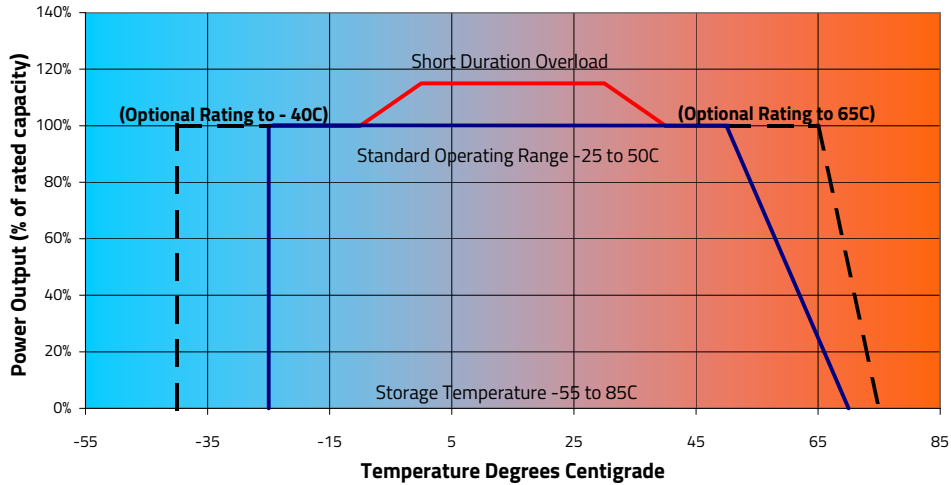
Created: April, 4th 2015
Revised: April, 26th 2015



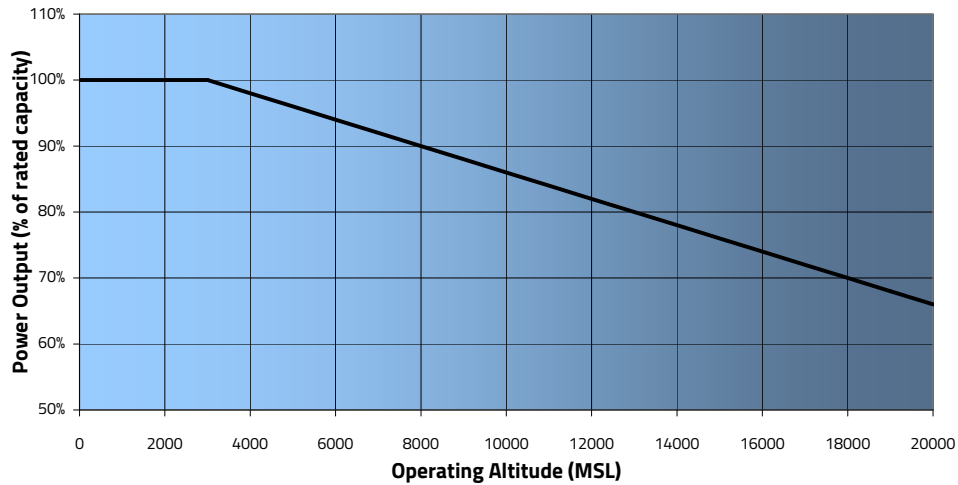
For engineering use only. For further information contact:
Sullivan Products
(410) 732-3500

Performance

Allowable Storage and Operating Temperature Profile

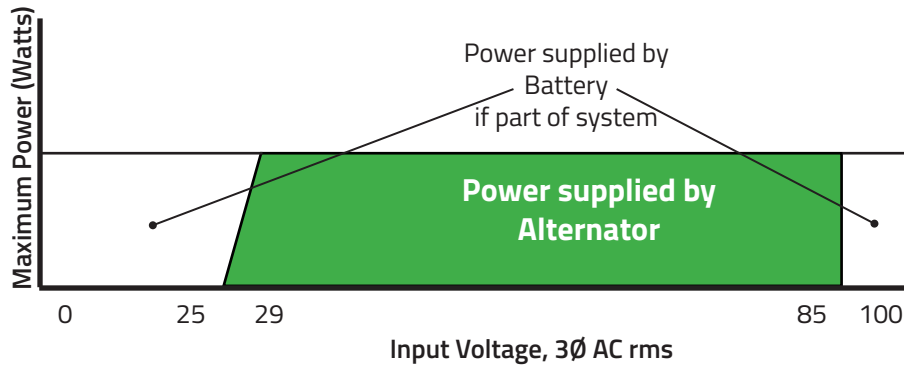


Power Derating due to Altitude



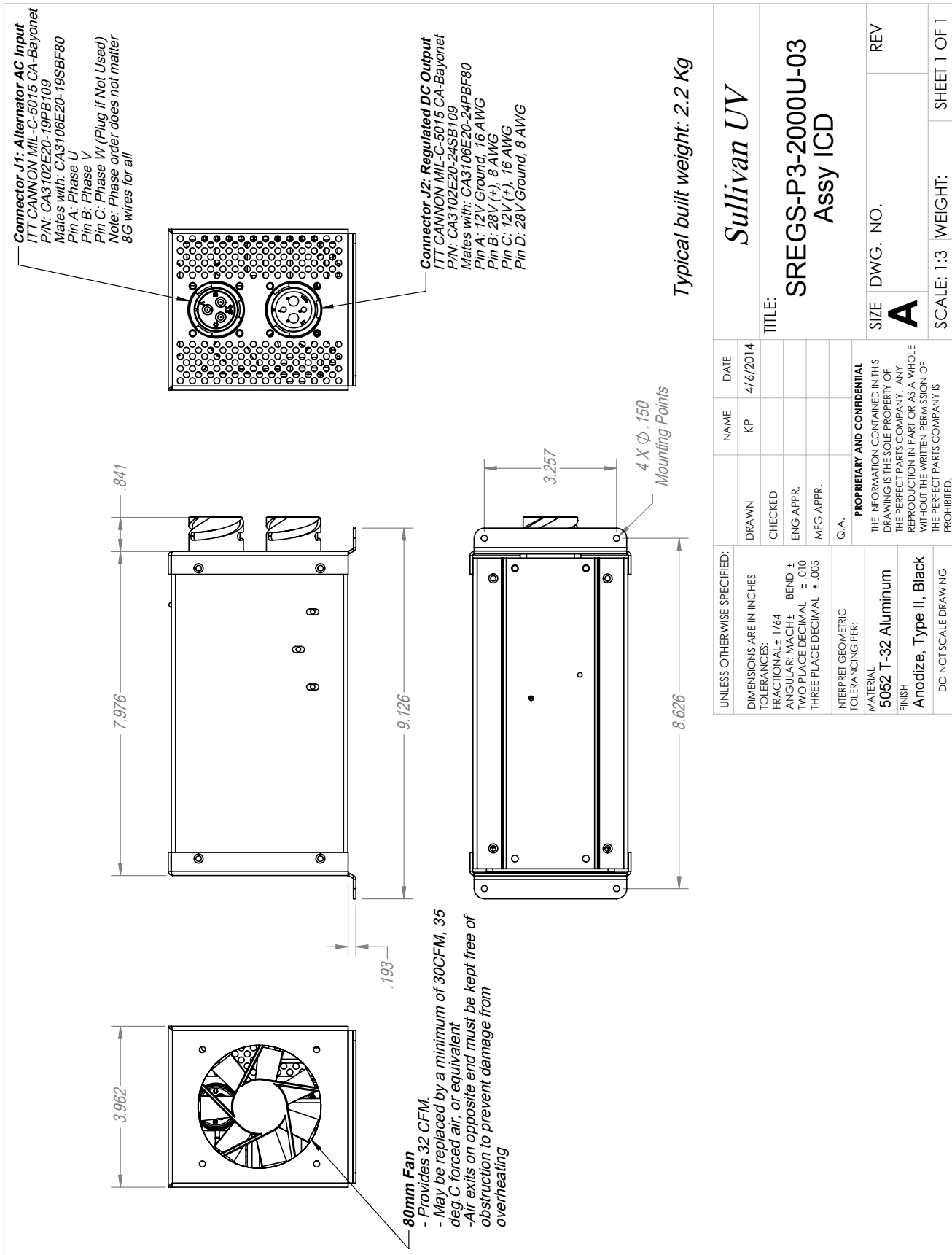
Alternator Input Range

28V Primary Output



SREGS-P3-2000U-03

2000 Watt Power Management Unit



UNLESS OTHERWISE SPECIFIED:		NAME	DATE
DIMENSIONS ARE IN INCHES		KP	4/6/2014
TOLERANCES:			
FRACTIONAL ± 1/64			
ANGULAR: MACH ±	BEND ±		
TWO PLACE DECIMAL ± .010	THREE PLACE DECIMAL ± .005		
INTERPRET GEOMETRIC TOLERANCING PER:			
MATERIAL		PROPRIETARY AND CONFIDENTIAL	
5052 T-32 Aluminum		THE INFORMATION CONTAINED IN THIS DRAWING IS THE SOLE PROPERTY OF THE PERFECT PARTS COMPANY. ANY REPRODUCTION IN PART OR AS A WHOLE WITHOUT THE WRITTEN PERMISSION OF THE PERFECT PARTS COMPANY IS PROHIBITED.	
FINISH			
Anodize, Type II, Black			
DO NOT SCALE DRAWING			
		SCALE: 1:3	WEIGHT: SHEET 1 OF 1

TITLE:		SIZE	DWG. NO.	REV
Sullivan UV		A		
SREGS-P3-2000U-03				
Assy ICD				