



SREGS-P3-3000U-01

3000 Watt Power Management Unit

Typical Applications:

- Unmanned Air Vehicles (UAV's) and Unmanned Ground Vehicles (UGV's)
- Remote Power Generation
- Power Regulation from Alternative sources, ex. wind or solar

Featuring:

- 3 Phase AC primary input, 15 - 85 VACrms.
 - 24 - 32 VDC 72 Amp Output
 - MIL-SPEC circular connectors
 - Operates up to 94% peak efficiency
 - Lightweight aluminum enclosure with active thermal management
-



SREGS-P3-3000U-01

3000 Watt Power Management Unit



Specifications



Output:	Conditions	Min	Max	Input:	Conditions	Min	Max
Main Output:	72A/3000W Max	24 VDC*	32 VDC*	Alternator Input Voltage:	3Ø 0 - 1 KHz	15 VAC	85 VAC
Secondary Output:	N/A			Backup Battery:	N/A		
Tertiary Output:	N/A						
Maximum Total Power:			3000 Watts	External Shore Power:	DC	24 VDC	32 VDC
Peak Efficiency:	Estimated		94%	Battery Switch Time:	N/A		
Self Protection:	Overvoltage, Undervoltage, Overcurrent, Reverse EMF			Mechanical: Conditions			
Maximum Overload Current:	Up to 10mS duration		125%	Enclosure Material:	Black Anodized Aluminum		
Output Ripple, Maximum:	p-p All Outputs		500mV	Dimensions:	100 mm x 118 mm x 219 mm		
Voltage Regulation:	All outputs		+/-500mV	Weight:	2200g		
Status Signal:	5V High Impedance			Connectors:	MIL-SPEC Circular Connectors		
Battery Charger Type:	Basic, Cell monitoring, or Full balance charging options available			Design Standard:	MIL-STD 1275D		
Back-up Battery Charging:	N/A			Conformal Coating:	MIL-I-46058C Type UR		
				Cooling:	32 CFM Fan, may be replaced by forced air		
				Operating Temperature:	-20C to 55C		
				Storage Temperature:	-40C to 85C		

*Factory Adjustable

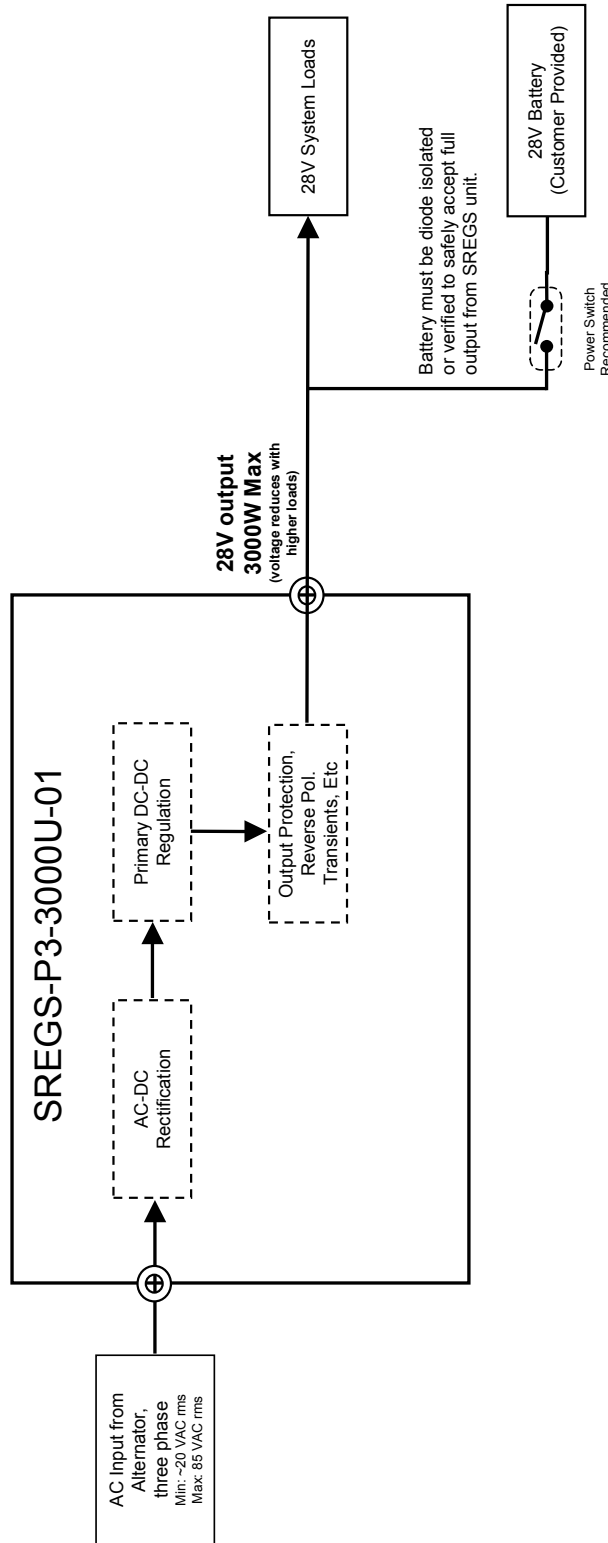
SREGS-P3-3000U-01

3000 Watt Power Management Unit



SULLIVAN UV SREGS-P3-3000U-01 Block Diagram

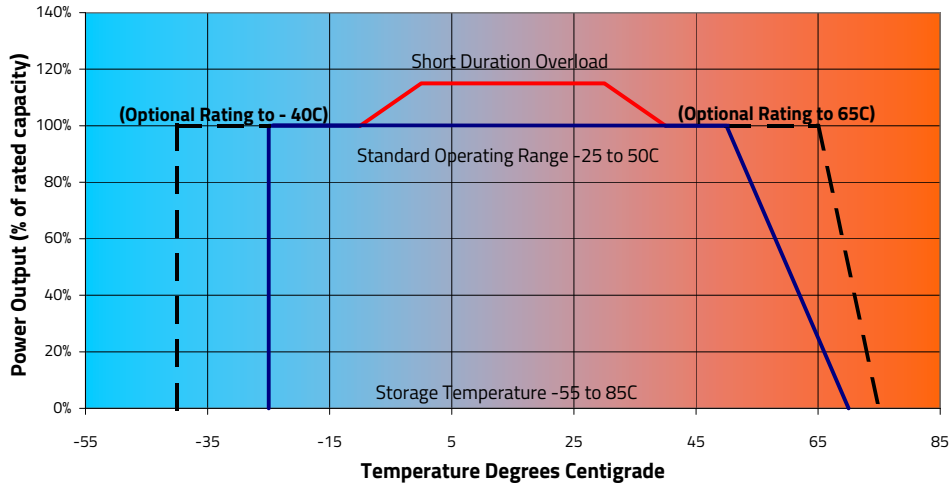
Created: April 20th, 2014
Revised: N/A



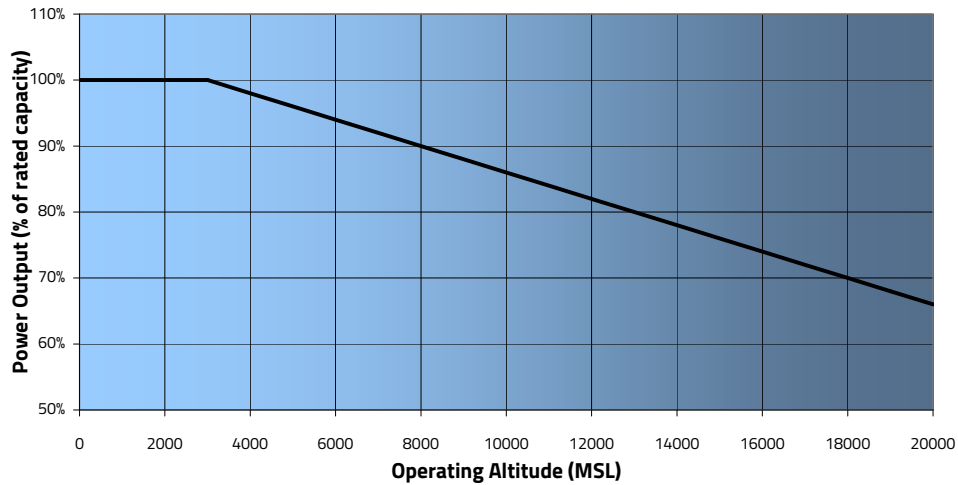
For engineering use only. For further information contact:
Sullivan Products
(410) 732-3500

Performance

Allowable Storage and Operating Temperature Profile

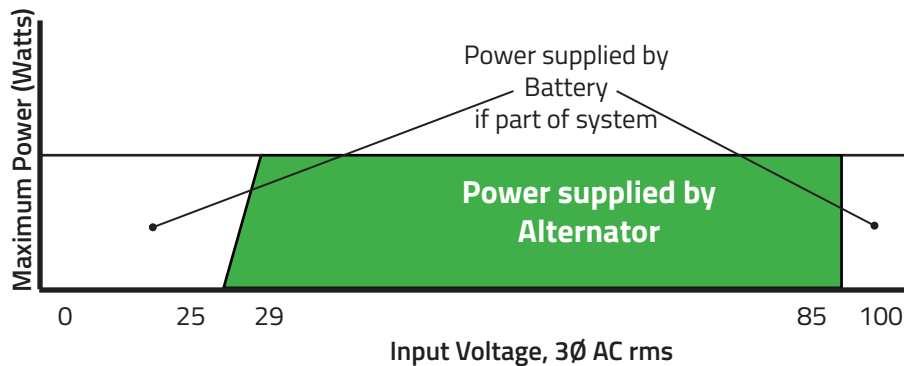


Power Derating due to Altitude



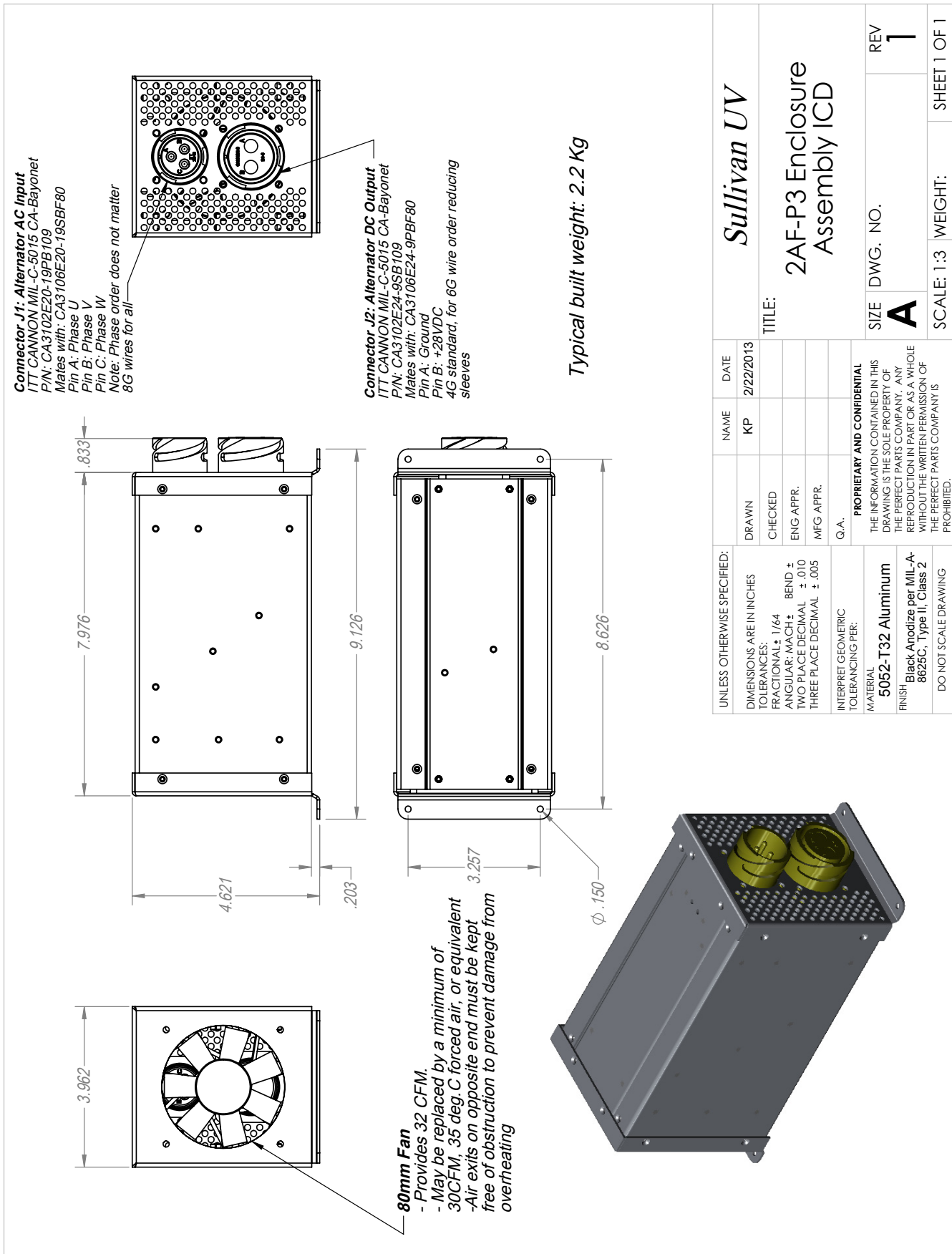
Alternator Input Range

28V Primary Output



SREGS-P3-3000U-01

3000 Watt Power Management Unit



UNLESS OTHERWISE SPECIFIED:		NAME	DATE
DIMENSIONS ARE IN INCHES		KP	2/22/2013
TOLERANCES:			
FRACTIONAL: $\pm 1/64$			
ANGULAR: MACH \pm BEND \pm			
TWO PLACE DECIMAL $\pm .010$			
THREE PLACE DECIMAL $\pm .005$			
INTERPRET GEOMETRIC TOLERANCING PER:			
MATERIAL		PROPRIETARY AND CONFIDENTIAL	
5052-T32 Aluminum		THE INFORMATION CONTAINED IN THIS DRAWING IS THE SOLE PROPERTY OF THE PERFECT PARTS COMPANY. ANY REPRODUCTION IN PART OR AS A WHOLE WITHOUT THE WRITTEN PERMISSION OF THE PERFECT PARTS COMPANY IS PROHIBITED.	
FINISH		SIZE	DWG. NO.
Black Anodize per MIL-A-8625C, Type II, Class 2		A	
DO NOT SCALE DRAWING		SCALE: 1:3	WEIGHT:
			SHEET 1 OF 1

Sullivan UV

2AF-P3 Enclosure Assembly ICD

REV **1**