

S676-600F-01

1600 to 5000 Watt Alternator

Featuring:

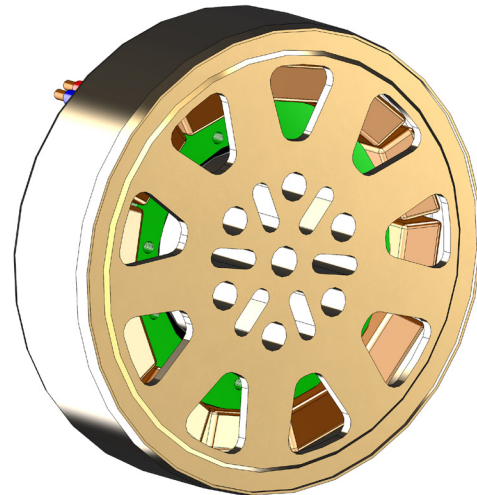
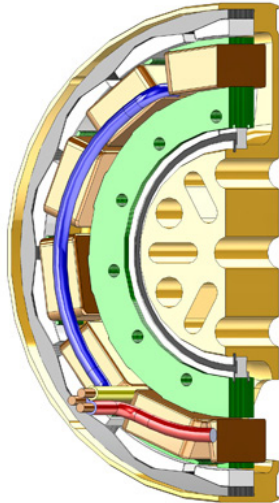
- 3 Phase brushless design
 - Designed for direct drive on engine crankshaft
 - Only one moving part, an optional sealed ball bearing, which can be eliminated when rigidly mounted
 - NdFeB magnets
 - Humidity and moisture-resistant
-

Sullivan
UNMANNED VEHICLE

S676-600F-01

1600 to 5000 Watt Alternator

Specifications



Model number:	S676-600F-01
Alternator diameter:	152mm
Alternator thickness:	45mm
Alternator weight:	2.6 Kg
Engines:	Most engines 100cc to 240cc
Rated power at 2500 RPM:	1600W
Rated power at 7500 RPM:	5000W
Standard wind type:	Three phase
No-load voltage constant:	12.5 VAC/1000 RPM (rms voltage, line to line)
Thermal: (Rotor)	Continuous Operation* 85°C Absolute Maximum* 120°C *Higher temperature available but maximum power will be reduced
Thermal: (Stator)	Continuous Operation 120°C Absolute Maximum 200°C
Options:	Special winding Modified shell machining

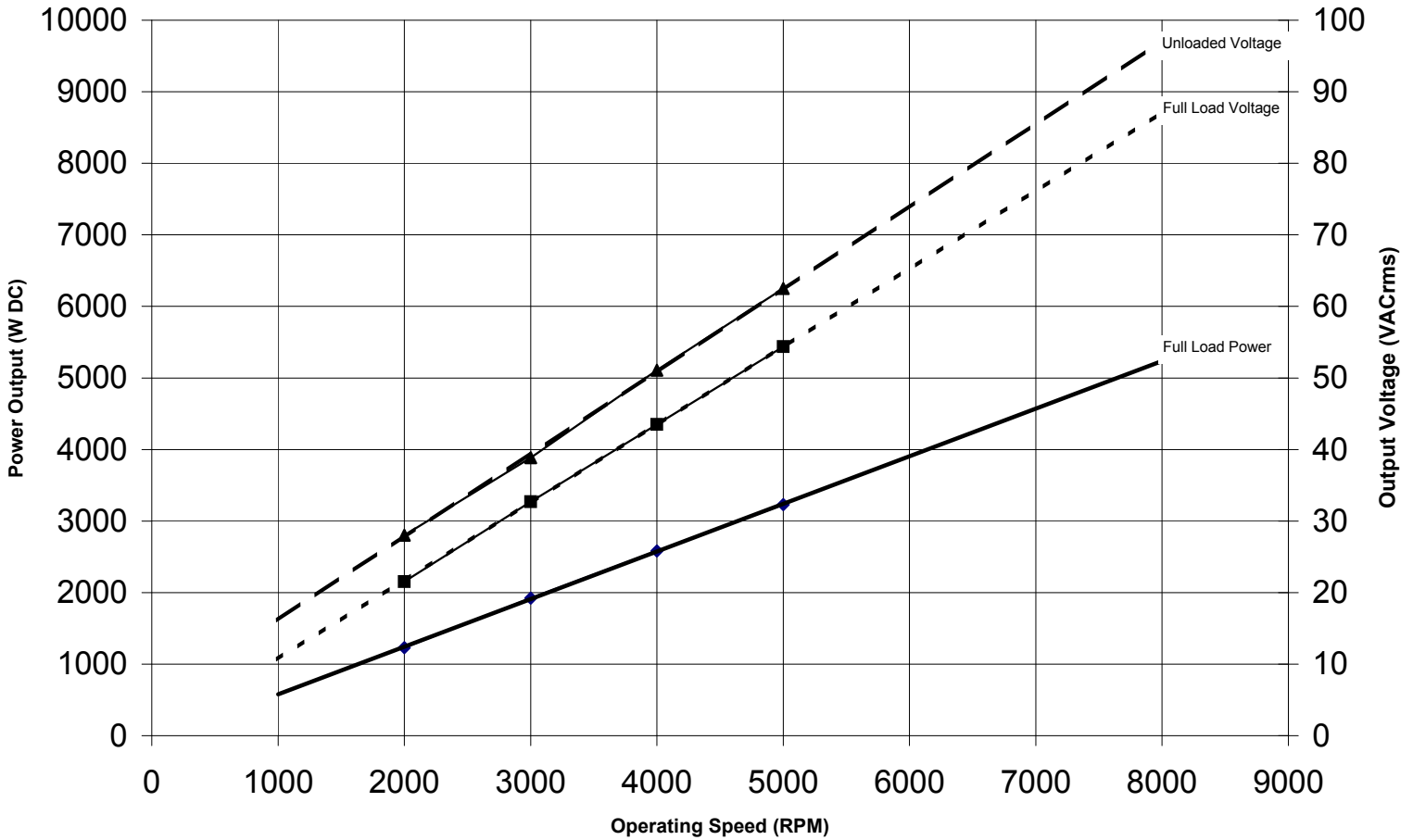
S676-600F-01

1600 to 5000 Watt Alternator



Performance

Rated Power vs RPM
S676-600F-01
(120 Max °C Stator Temperature)



Sullivan UV

8950 Yellow Brick Rd

Baltimore, MD 21237

Phone: 410-732-3500 Fax: 410-327-7443

W: www.SullivanUV.com E: sales@sullivanuv.com

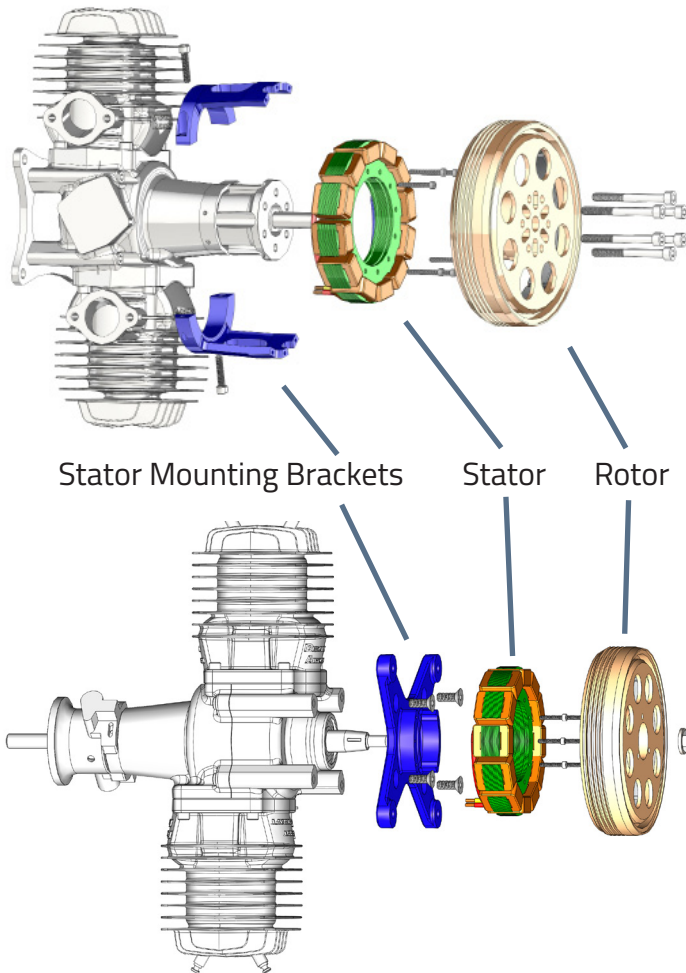
Sullivan UV is a Baltimore, Maryland-based manufacturer of custom crafted starters, alternators and control hardware.

S676-600F-01

1600 to 5000 Watt Alternator



Mounting



Typical Front Mount



Typical Rear Mount



Sullivan Pancake Alternators are typically designed to be directly driven by the engine crankshaft. They consist of three main parts, Rotor, Stator, and the Stator Support Bracket. The Rotor and Stator are common for most installations, while the Stator Support Brackets are specific to each engine and alternator combination.

The **Rotor** is affixed directly to the crankshaft and is supported by the crankshaft bearings. Placement can be on the front shaft between the Propeller Hub and Propeller, or on the rear shaft when available. Other installation configurations can also be accommodated.

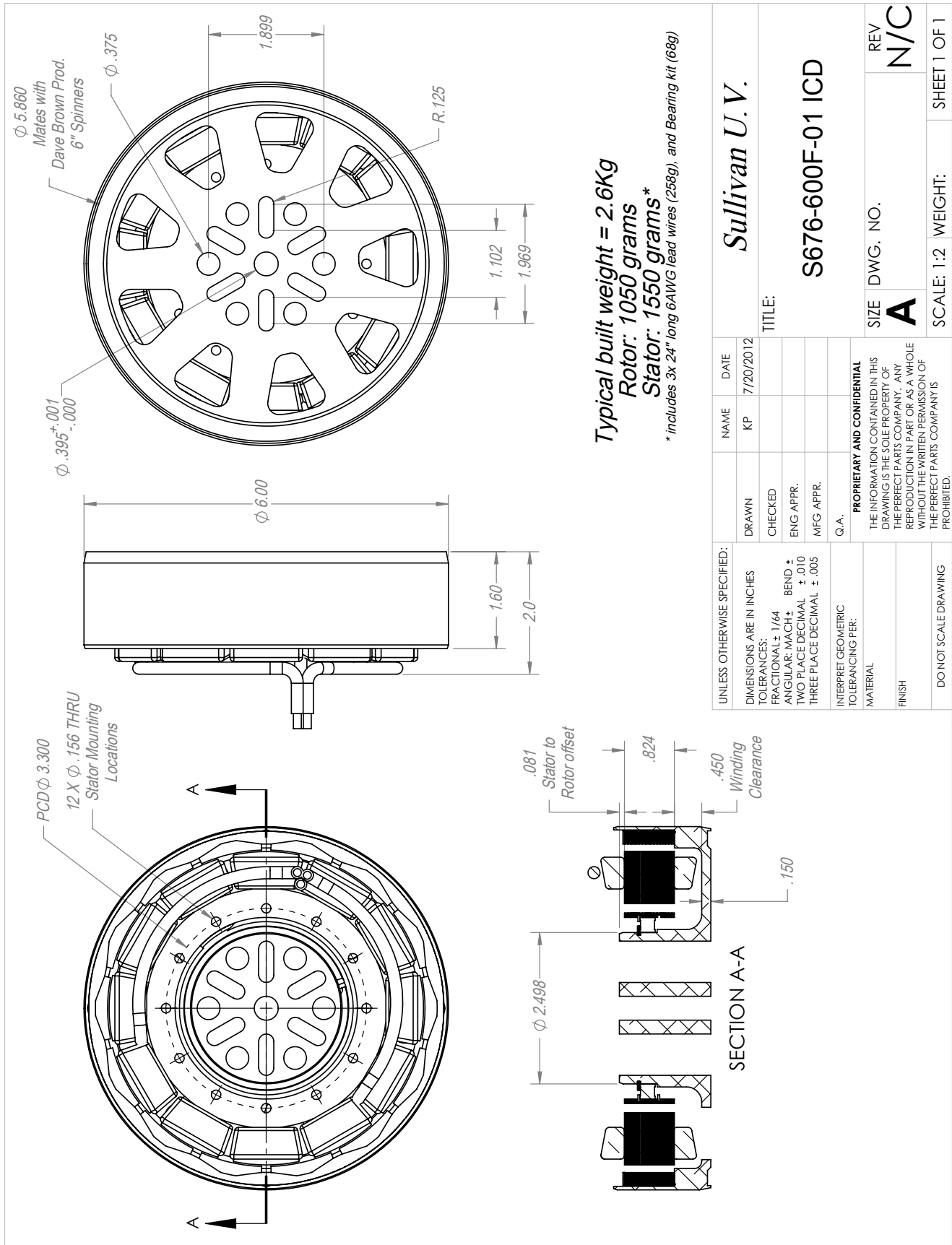
The **Stator** is mounted to the engine crankcase via the Stator Mounting Bracket. The Stator is held rigidly in place concentric to the Rotor, with the windings and magnets aligned axially. An optional thin section bearing can be included that provides the proper alignment between the Rotor and Stator if needed.

The **Stator Mounting Brackets** are typically CNC machined from Billet Aluminum. They attach to the engine by either clamping to existing features or bolting directly to the crankcase. In some cases it is necessary to drill and tap the crankcase to create mounting points. The Stator is then bolted to the Mounting Bracket to complete the installation. Installation guides can be downloaded at www.SullivanUV.com

For advanced systems, stator mounting features can be incorporated into the crankcase design which eliminate the need for the bearing and brackets. This approach saves considerable weight and cost but requires control over the engine manufacturing process. If this option is available please contact Sullivan Sales and Engineering, Sales@SullivanUV.com, to discuss the details.

S676-600F-01

1600 to 5000 Watt Alternator



Typical built weight = 2.6Kg
 Rotor: 1050 grams*
 Stator: 1550 grams*
 * includes 3x 24" long 6AWG lead wires (258g), and Bearing kit (68g)

UNLESS OTHERWISE SPECIFIED:		NAME	DATE
DIMENSIONS ARE IN INCHES		KP	7/20/2012
TOLERANCES:		TITLE:	
FRACTIONAL: 1/64		Sullivan U.V.	
ANGULAR: MACH ±		S676-600F-01 ICD	
TWO PLACE DECIMAL ± .010		REV	
THREE PLACE DECIMAL ± .005		N/C	
INTERPRET GEOMETRIC TOLERANCING PER:		SIZE	DWG. NO.
MATERIAL		A	
FINISH		SCALE: 1:2 WEIGHT:	
DO NOT SCALE DRAWING		SHEET 1 OF 1	
		REV	
		N/C	

1 2 3 4 5